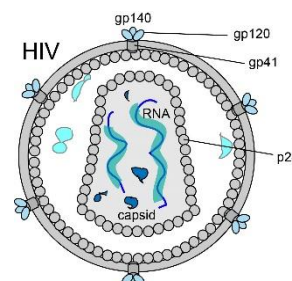


HIV surface protein gp120

Catalogue no.: Q1, Q3, Q7, Q9 and Q53
Clone name: J3, 3E3, 1B5, 1F10 and 1H9
Product: VHH directed against HIV gp120

Target: HIV-1 is an enveloped RNA lentivirus from the retroviridae family ¹. The surface of virus expresses trimeric mushroom-shaped, HIV-1-Env glycoprotein complexes that facilitate virus uptake via interaction with CD4 and CCR5 or CXCR4 on host cells.⁴ Env is a glycosylated trimer of non-covalently linked gp120 (UniprotKB [Q9YXH5](#)) and gp41, formed upon proteolytic cleavage of the precursor gp160.⁵



Source: Recombinant monoclonal VHH (*Llama glama*), purified from *S.cerevisiae* using affinity chromatography.
 Immunization with recombinant proteins. Phage-display selection on captured recombinant protein using competitive or total elution.

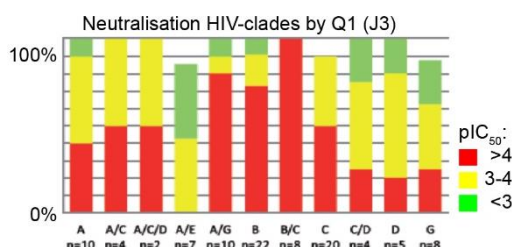
Specificity: Q1 (J3) and Q3 (3E3) bind to the CD4 binding site on gp120.⁶
 Q7 (1B5) binds near the bridging sheet, the V3 loop and the CD4 binding loop.⁷
 Q9 (1F10) binds the V3 loop of gp120.⁷
 Q53 (1H9)

Formulation: 0.2 µm filtered solution in PBS.

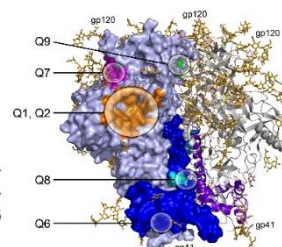
Storage: Shipped on blue ice. Store at 4°C or -20°C (aliquots).
 Addition of 0.02% sodiumazide is optional.

Applications: ELISA, virus neutralization.

Examples:



Broad HIV-1 neutralisation by Q1 (J3).⁶



Products:

Cat. No.	Target	Tag	Label
Q1, Q3, Q9 and Q53	gp120	Tagless	No label
Q1c, Q3c, Q9c and Q53c	gp120	C-direct	No label
Q1c-lab, Q3c-lab, Q9c-lab and Q53c-lab	gp120	C-direct	Biotin / NOTA / HiLyte488 / IRDye800CW

References:

- [Ganser-Pornillos B.K.](#) et al. (2008) *Curr Opin Struct Biol* 18:203–217
- [Bell N.M. and Lever A.M.](#) (2013) *Trends Microbiol* 21:136–144
- [de Marco A. et al.](#) (2010) *PLoS Pathog* 6:e1001215
- [Tamamura et al.](#) (2005) *Curr HIV res* 3, 289-301
- [Hallenberger et al.](#) (1992) *Nature* 360, 358-361
- [McCoy et al.](#) (2012) *J Exp Med* 209, 1091-1103
- [Strokappe et al.](#) (2012) *PLoS One*, doi: 10.1371
- [Lutje Hulsik et al.](#) (2013) *PLoS Pathog*, doi: 10.1371