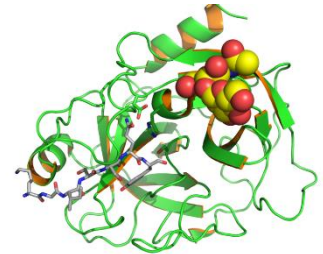


Anti-Prostate Specific Antigen (PSA) / Kallikrein 3

Catalogue no.: Q61
Clone name: PSA

Product: VHH directed against Prostate Specific Antigen (PSA) / Kallikrein 3

Target: Kallikrein 3, commonly known as the Prostate Specific Antigen (PSA), UniProtKB [P07288](#)), is a serine protease that is produced in the prostate gland and is secreted into the seminal plasma ¹. Upon the formation of prostate cancer, an increased level of PSA in the blood circulation can be detected, making PSA a well-established marker for the diagnosis and monitoring of prostate cancer ². Molecular structure obtained from PDB file 2ZCK ³.



Source: Recombinant monoclonal VHH (*Llama glama*), purified from *S.cerevisiae*. Immunization with and phage-display selection with total elution on captured recombinant protein.

Specificity: Human PSA.

Formulation: Frozen 0.2 µm filtered solution of VHH in PBS.

Storage: Shipped on blue ice. Store at 4°C or -20°C (aliquots). Addition of 0.02% sodiumazide is optional.

Applications: ELISA

Products:

Cat. No.	Target	Tag	Label
Q61	PSA	Tagless	No label
Q61c	PSA	C-direct	No label
Q61c-lab	PSA	C-direct	Biotin / NOTA / HiLyte488 / IRDye800CW

References:

- [Yousef and Diamandis](#) (2001) Endocr Rev 22, 184-204
- [Pezaro et al.](#) (2014) Intern Med J 44, 433-440
- [Ménez et al.](#) (2008) J Mol Biol 376, 1021-1033